

Download the Full manual at dataprobe.com/support-iboot-poe

Hardware Connections



iBoot-PoE-P supports 10/100/1000 Ethernet using the cable supplied, or other suitable unshielded twisted pair (Cat 5-6) cabling.

Power is derived from either the PSE, such as a PoE Network Switch or a PoE Injector. The iBoot-PoE-P supports 802.3af Mode A, Mode B and 4PPoE wiring specifications, 9 – 72 VDC.

- Connect the PoE OUT connector to the PoE Device to be controlled (PD); Camera, Access Point, Phone, etc.
- Connect the NET IN connector to the PoE Power source (PSE); PoE Switch, Midspan or Injector.

| PINS | Mode B Voltage on Spare Pins | Mode A Mixed Data and Voltage | 4PPoE (802.3bt Type 3 / 4 Draft D1.2) Voltage on all pins |
|---|---------------------------------|----------------------------------|---|
| 1 | | DC + | DC + |
| 2 | | DC + | DC + |
| 3 | | DC - | DC - |
| 4 | DC + | | DC + |
| 5 | DC + | | DC + |
| 6 | | DC - | DC - |
| 7 | DC - | | DC - |
| 8 | DC - | | DC - |
| Power Output on the PoE OUT connector will be identical to whatever mode is used on the NET IN connector. | | | |

LED Displays

- **NET IN** Power is received by the iBoot-PoE from the PSE.
- **PoE OUT** Power is delivered to the Controlled Device (PD).

Discover and Set the IP Address

If your network supports DHCP, the IP address of the iBoot will be automatically assigned. Find the IP Address of the iBoot using either from the DHCP Router/Server or use the Dataprobe Device Management Utility (DMU), available at

dataprobe.com/support-iboot-poe

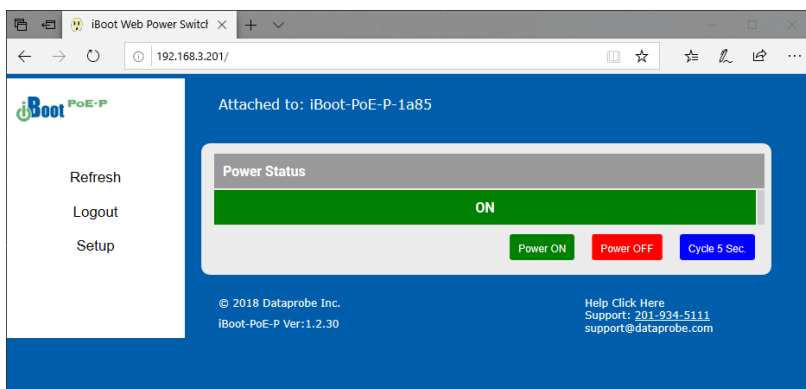
See Page 3 for more in the DMU.

Web Browser PoE Power Control

| | |
|--|------------------------------------|
| Factory Default IP Address: | DHCP Set or 192.168.1.254 |
| Factory Default Security Credentials: | User: admin Password: admin |

Point your browser to the IP Address of the iBoot-PoE, and then enter the Administrator Username and Password. Once the user is validated, the Control and Status is displayed.

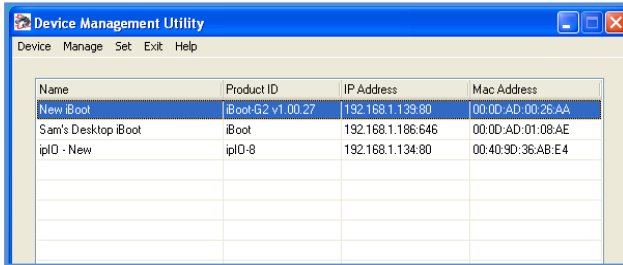
To control the power, click on the appropriate button. During power cycling, the Power Status bar will indicate the temporary status, with a blue background. Once the cycle is complete, the status bar will revert to its original condition.



Changing the IP Address

1. Device Management Utility

Obtain the Device Management Utility (DMU) from Dataprobe's website at dataprobe.com/support-iboot-poe

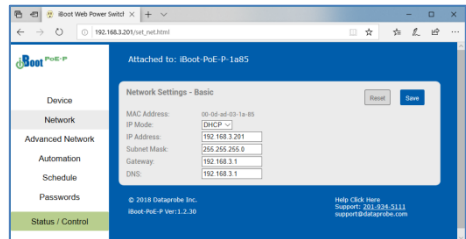


- Open the DMU on a PC on the same physical network as the iBoot and select **Device > Discover** to display the current IP Address of the iBoot.
- Select **Set > IP Address** to change the address. The IP address can only be set within the first two minutes of powering up the iBoot. The DMU will only work with iBoots on the same physical subnets as the PC.

Complete instructions for the DMU are provided with the download, and in the full [iBoot-PoE Manual](#).

2. Web Page Setup

From the home page, click on Setup, and then Network. Enter the new IP Address, Subnet Mask and Gateway, then click Save. Click the Reboot button (or press the reset button on the side of the unit to restart the iBoot-PoE with the new settings. To lock the settings, select IP Mode = Static. If IP Mode remains DHCP, the iBoot will obtain an address from a DHCP Server as soon as it finds one.



The full manual covers all the automation and cloud control features

dataprobe.com/support-iboot-poe