

## 1. Overview

This document details the procedure for upgrading the firmware in the IPC-16-R Network Control Card for the RSS systems. Part number 1340065. *This procedure can **only** upgrade existing units with firmware version 1.01.067 to 1.01.070.*

If your serial number is 1340065000xxxxx – 1340065002xxxxx and your firmware is current firmware version is 4.1D, then you have the older revision hardware, and **cannot** use this technique to upgrade.

If your Serial number is 1340065003xxxxx or better, then the process will use File Transfer Protocol (FTP) to upload the firmware image.bin to the IPC-16-R.

## 2. Before You Begin

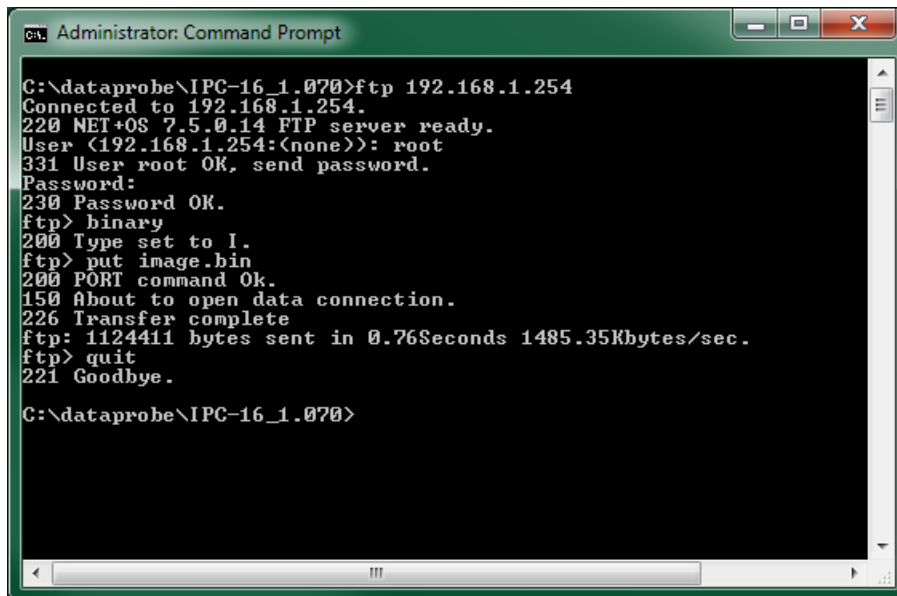
Download the desired image.bin file and place it an easily accessible directory. The program file needs to stay named image.bin, so use the directory name to uniquely identify the version. The sample below used c:\dataprobe\IPC-16\_v1.070. You will also need the IP address of the IPC to be upgraded, and the current administrator account password. ( default is admin )

## 3. Procedure

- 1) Open a command prompt and change directories to the one with the image.bin file in it.  
**C> cd C:\dataprobe\IPC-16\_1.070<enter>**
- 2) Open an FTP client. Windows users can use Start...Run...FTP to open the FTP client. Other users consult your FTP client documentation.
- 3) Connect to the IP address of the IPC-16. Using the windows client:  
**FTP> Open xxx.xxx.xxx.xxx <enter>**  
Where xxx.xxx.xxx.xxx is the ip address of the IPC-16
- 4) At the username prompt enter root <enter>  
**FTP> root <enter>**
- 5) At the password prompt enter the administrator password <enter>  
**FTP> admin<enter>**  
*Note: YOU WILL NOT SEE THE PASSWORD BEING ECHOED.  
YOU WILL GET A "230 Password OK" MESSAGE*
- 6) Change the transfer type to Binary  
**FTP> binary <enter>**
- 7) Upload the file image.bin with the put command  
**FTP> put image.bin <enter>**
- 8) Quit the FTP Client to start the upgrade  
**FTP> quit<enter>**

REF: ipc-16-r\_upgrade\_140821e

#### 4. DOS Screen During Upgrade Process



#### 5. Telnet Screen “get all” to show version

