

What's Included

- iBoot-G2+ Unit
- Power Input Cable for North America
- Power Outlet Cable for North America
- Network Cable
- USB Cable

Available Online at

dataprobe.com/support_iboot-g2-plus.html

- Complete Product Manual
- Device Management Utility
- Latest iBoot-G2+ Firmware
- Software Developer Tools

Connections

- 1. Connect Network.** iBoot-G2+ supports 10/100 Ethernet using the cable supplied, or other suitable unshielded twisted pair (Cat 5) cabling. When power is connected to the iBoot-G2+, the green Activity LEDs on the network connector indicates when the network connection is properly established.
- 2. Connect Powered Device.** Connect the device to be powered ON and OFF to the IEC receptacle marked A/C Outlet. An IEC-320 to North American (NEMA 5-15) power cord is included for connecting the iBoot outlet to the device to be controlled. If the device has a power switch, turn it on, to allow iBoot-G2+ to control the power.



Make sure that the combined load of all controlled devices does not exceed 12 Amps for 105-125VAC or 10 Amps for 210-240VAC.

- 3. Connect Power Mains** Connect the supplied power cord to the connector labeled AC Input, and the other end to your AC source. If a power cord with a different terminating plug is required, be sure it is properly rated and meets all the required local electrical standards.

Web Browser Access

Factory Default IP Address: DHCP Set or 192.168.1.254

Factory Default Security Credentials:

Role	Username	Password
Administrator	admin	admin

Discover and/or Set the IP Address

If your network supports DHCP, the IP address of the iBoot will be automatically assigned. Find the IP Address of the iBoot using either from the DHCP Router/Server or use the Dataprobe Device Management Utility (DMU), available at dataprobe.com/support_iboot-g2-plus.html. See Page 2 for more in the DMU.

Point your browser to the IP Address of the iBoot, then enter the Administrator Username and Password to access the complete setup features. Once the user is validated, the Control and Status is displayed.

To control the power, click on the appropriate button. During power cycling, the Power Status bar will indicate the temporary status, with a blue background. Once the cycle is complete, the status bar will revert to its original condition.

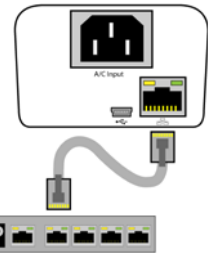


Fig. 1 Connect Network

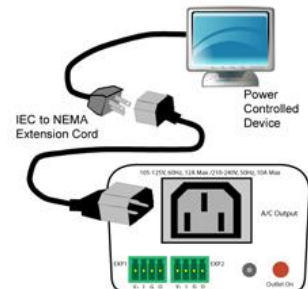


Fig. 2 Connect Device

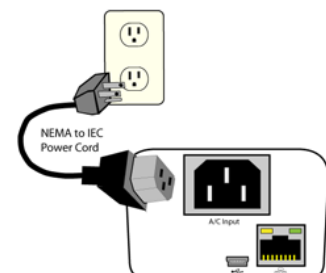


Fig. 3 Connect Power

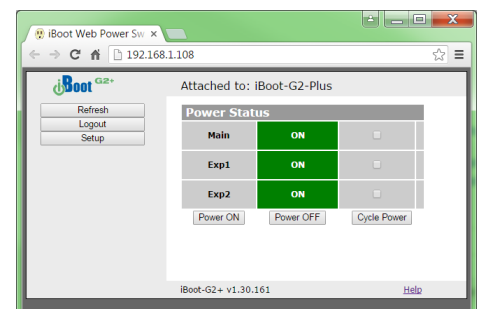


Fig. 4 Status and Control Page

Changing the IP Address

1. **Device Management Utility** Obtain the Device Management Utility (DMU) from Dataprobe's website at dataprobe.com/support_iboot-g2-plus.html.

- Open the DMU on a PC on the same physical network as the iBoot and select **Device > Discover** to display the current IP Address of the iBoot.
- Select **Set > Network Settings** to change the network settings. The IP settings can only be set within the first two minutes of powering up the iBoot. The DMU will only work with iBoots on the same physical subnets as the PC

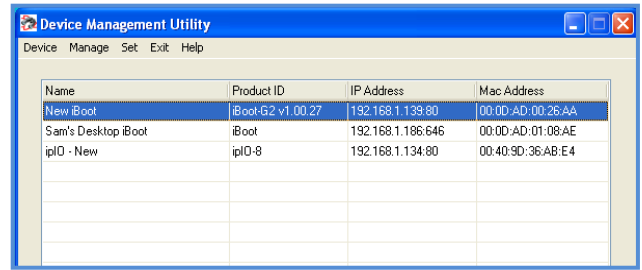


Fig. 5 Device Management Utility

Complete instructions for the DMU are provided with the download, and in the full iBoot-G2+ Manual.

2. **Web Page Setup** From the home page, click on Setup, then Network. Enter the new IP Address, Subnet Mask, Gateway and DNS, then click Save. Click the Reboot button (or press the reset button next to the power outlet LED) to restart the iBoot-G2+ with the new settings. To lock the settings, select IP Mode = Static. If IP Mode remains or is programmed to DHCP, the iBoot will obtain an address from a DHCP Server as soon as it finds one.

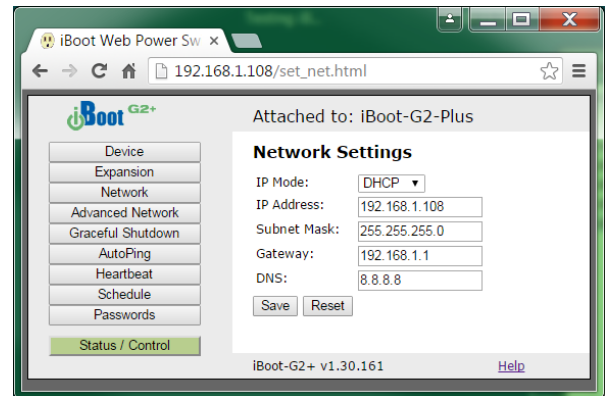


Fig. 6 Network Setup Page

To get all the benefits of your iBoot, register it: dataprobe.com/product-registration.html

- Notification of Updates
- Expedited Warranty Service
- Exclusive Offers
- Advanced End-of-Life Notification

Important Safety Instructions

When using this product, basic safety precautions should always be followed to reduce the risk of fire, electric shock, and injury to persons, including the following:

- Read and understand all instructions.
- Follow all warnings and marked on the product.
- Unplug this product from the wall outlet before cleaning. Do not use liquid cleaners or aerosol cleaners. Use a damp cloth for cleaning.
- Do not use this product in an outdoor environment or near water, for example, near a bath tub, wash bowl, kitchen sink, or laundry tub, in a wet basement, or near a swimming pool.
- Do not place this product on an unstable cart, stand, or table. The product may fall, causing serious damage to the product.
- Slots and openings in this product and the back or bottom are provided for ventilation to protect it from overheating; these openings must not be blocked or covered. The openings should never be blocked by placing the product on the bed, sofa, rug, or other similar surface. This product should never be placed near or over a radiator or heat register. This product should not be placed in a built-in installation unless proper ventilation is provided.
- This product should be operated only from the type of power source indicated on the marking label. If you are not sure of the type of power supply to your home, consult your dealer or local power company.
- This product is equipped with a three wire grounding type plug, a plug having a third (grounding) pin. This plug will only fit into a grounding type power outlet. This is a safety feature. If you are unable to insert the plug into the outlet, contact your electrician to replace your obsolete outlet. Do not defeat the safety purpose of the grounding type plug. Do not use a 3-to-2 prong adapter at the receptacle; use of this type adapter may result in risk of electrical shock and/or damage to this product.
- Do not allow anything to rest on the power cord. Do not locate this product where the cord will be abused by persons walking on it.
- Do not overload wall outlets and extension cords as this can result in the risk of fire or electric shock.
- Never push objects of any kind into this product through slots as they may touch dangerous voltage points or short out parts that could result in a risk of fire or electrical shock. Never spill liquid of any kind on the product.
- To reduce the risk of electrical shock, do not disassemble this product, but take it to a qualified serviceman when some service or repair work is required. Opening or removing covers may expose you to dangerous voltages or other risks. Incorrect re-assembly can cause electric shock when the appliance is subsequently used.
- Unplug this product from the wall outlet and refer servicing to qualified service personnel under the following conditions:
 - When the power supply cord or plug is damaged or frayed.
 - If liquid has been spilled into the product.
 - If the product has been exposed to rain or water.
 - If the product does not operate normally by following the operating instructions. Adjust only those controls that are covered by the operating instructions because improper adjustment of other controls may result in damage and will often require extensive work by a qualified technician to restore the product to normal operation.
 - If the product has been dropped or has been damaged.
 - If the product exhibits a distinct change in performance.
- Avoid using a telephone (other than a cordless type) during an electrical storm. There may be a remote risk of electric shock from lightning.
- Do not use the telephone to report a gas leak in the vicinity of the leak.
- Do not exceed the maximum output rating of the auxiliary power receptacle.

Dataprobe Inc
1 Pearl Court, Suite B
Allendale New Jersey 07401

Technical Support
tech@dataprobe.com 201-934-5111
www.dataprobe.com/support 201-934-9944







Mounting Options

iBoot-G2+ is suitable for desktop or shelf mounting. A mounting kit for wall and DIN rail mounting is available. Order part:

1920034 iBoot-MK Mounting Kit for iBoot-G2 Series



1920034 Mounting Kit
iBoot G2 Series

Installing the Wall Mounting Kit	DIN Rail Mounting
<p>1. Remove all cables from the unit</p>	<p>1. Install the Wall Mounting Kit as shown.</p> 
<p>2. Remove the four mounting screws from the underside of the unit.</p> <p>Do not disassemble the unit.</p> 	<p>2. Install the DIN rail clips using the four screws provided.</p> 
<p>3. Install the wall mounting ears to the unit using the screws removed in Step 2</p> 	<p>3. Ready for DIN rail mounting.</p> 
<p>4. The unit is ready for wall mounting.</p> <p>Use M3 or #4 screws (not included) for attachment to suitable surface.</p> 	

Dataprobe Inc
1 Pearl Court, Suite B
Allendale New Jersey 07401

Technical Support
tech@dataprobe.com 201-934-5111
www.dataprobe.com/support 201-934-9944