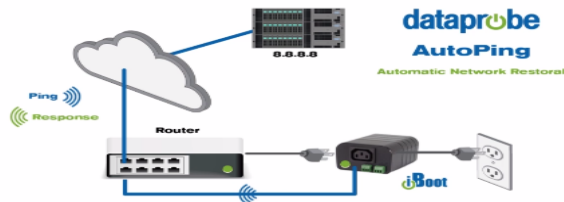


Tip #4: Use AutoPing to Test Network

The Auto-Ping feature allows iBoot to automatically detect failed equipment and perform a timed reboot or other power control function (like turning on an indicator or siren). You set any IP address to be periodically Ping'ed. When iBoot no longer detects a response from that address, the programmed power control function is actuated. Power Control can be Power-Up, Power-Down or Timed Reboot (either once or repeatedly until the ping response resumes). With Auto-Ping you can:

- Detect failed cable modem/router and Auto Reboot
- Auto reboot your server when it crashes
- Turn on an alert with something goes wrong

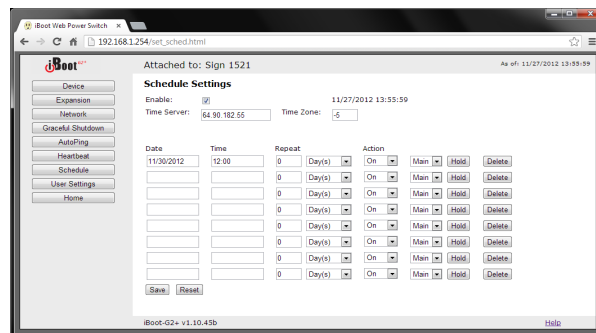


Read more about Auto-Ping: [Click Here](#)

Tip #5: Use Schedule for Periodic Reboot

Schedule up to eight periodic tasks by Day, Hour or Minutes. Repeat the event as often as necessary and program the power action to take. With the scheduler you can:

- Reboot your system every morning to keep it in tip-top condition
- Keep systems powered down when not needed to save energy
- Power down sensitive systems to minimize hacker exposure



See More iBoot Tips and Tricks: [#1](#) [#2](#)

[Friend on Facebook](#)

[Follow on Twitter](#)

Need More Outlets?

With the iBoot-G2+ version you can add two expansion units to get three independently controlled outlets.

Order low cost expansion units for your iBoot-G2+ at the [iBoot-G2+ product page](#)



iBoot-G2+ With Expansion

Review us on Amazon

If iBoot has helped you improve your network, please consider posting a review on Amazon. If there is anything we can do to improve your experience, please contact us first.

[iBoot-G2 Review Link](#)

[iBoot-G2+ Review Link](#)

Contact Us

[Visit dataprobe.com](http://www.dataprobe.com)

Sales: 201-934-9944

Support: 201-934-5111

sales@dataprobe.com

support@dataprobe.com