

## Thank you for your Purchase

Thank you for putting your trust in iBoot to help you manage your network and minimize downtime. Dataprobe is dedicated to helping you get the most value possible from your iBoot. If you ever have any questions, please don't hesitate to contact us.

## Register your iBoot

Product Registration keeps you informed with the latest firmware releases, and important service announcements. Registered users get priority service support through the lifetime of ownership. [Register Now.](#)

## Tip #1: Watch The Getting Started Video

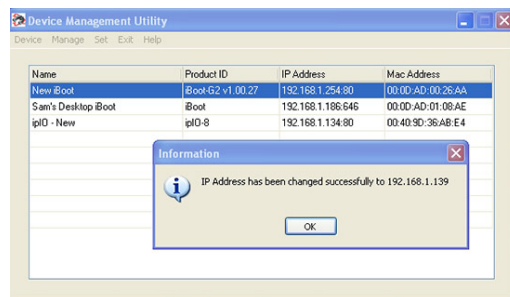
This video walks you through the setup and initial configuration of the iBoot-G2 and iBoot-G2+. Its the easiest way to get your iBoot up and running.



## Tip #2: Download the Setup Utility

If you haven't already configured your iBoot, download the Device Management Utility (DMU) from the [iBoot Support Center](#). It provides the quickest and easiest way to get your iBoot (G2 or G2+) up and running fast. With the DMU you can:

- Set the IP address of any iBoot attached to your local network.
- Find all the iBoots on your network, regardless of IP Address
- Reset Forgotten Passwords and Factory Defaults



See More iBoot Tips and Tricks: [#2](#) [#3](#)

[Friend on Facebook](#)

[Follow on Twitter](#)

## Need to Mount your iBoot?

Dataprobe's iBoot Mounting Kit is an easy way to attach your unit to a backboard, cabinet or other surface. It also provides DIN rail clips for industrial applications. Get yours today at the [iBoot Web Page](#)



iBoot Mounting Kit

## Review us on Amazon

If iBoot has helped you improve your network, please consider posting a review on Amazon. If there is anything we can do to improve your experience, please contact us first.

[iBoot-G2 Review Link](#)

[iBoot-G2+ Review Link](#)

## Contact Us

[Visit dataprobe.com](#)

[Sales: 201-934-9944](#)

[Support: 201-934-5111](#)

[sales@dataprobe.com](#)

[support@dataprobe.com](#)